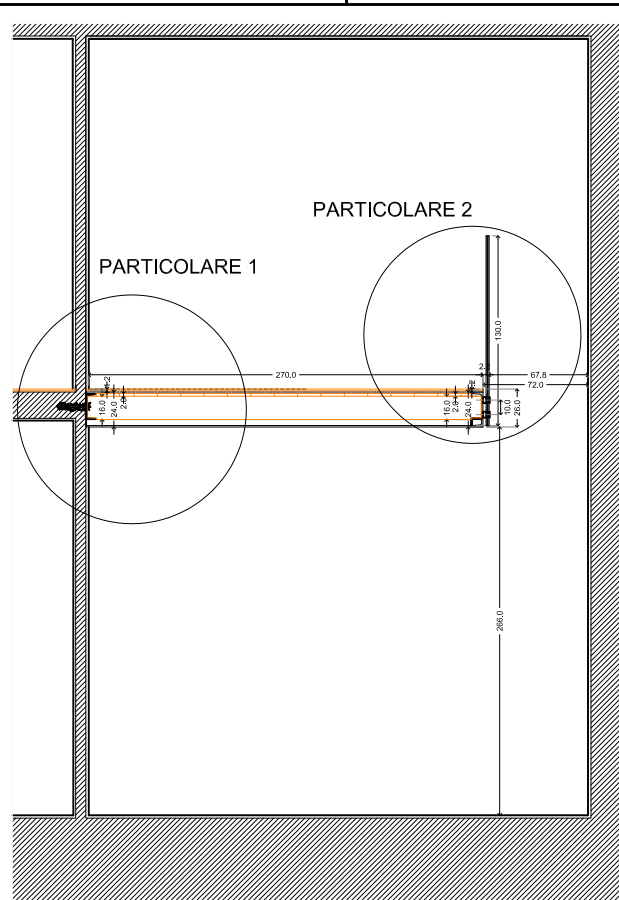
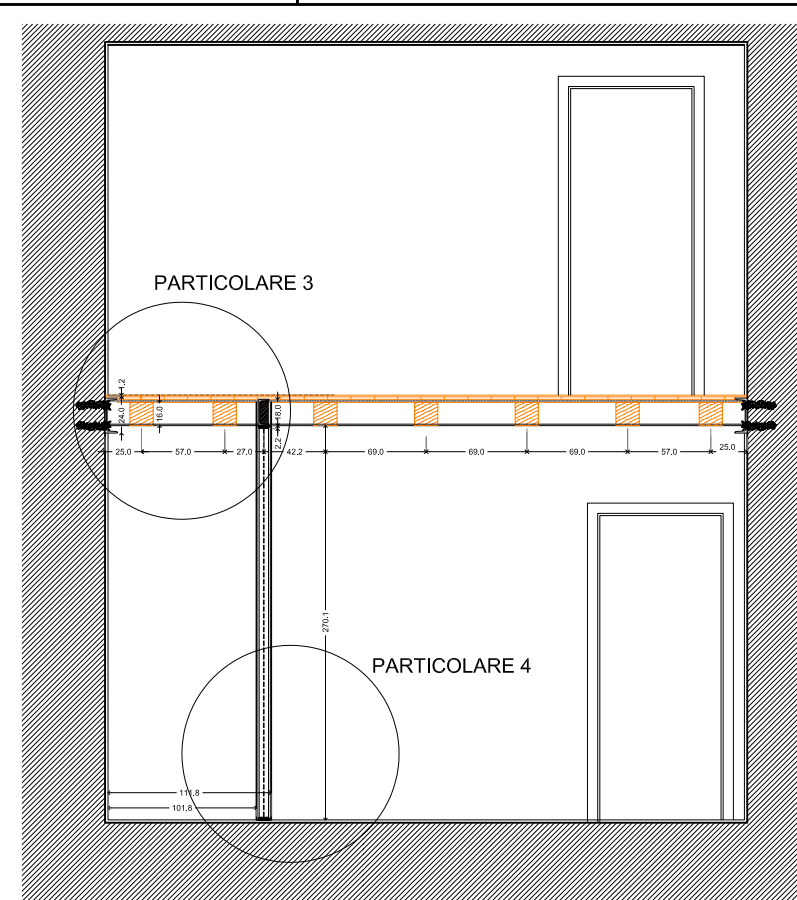


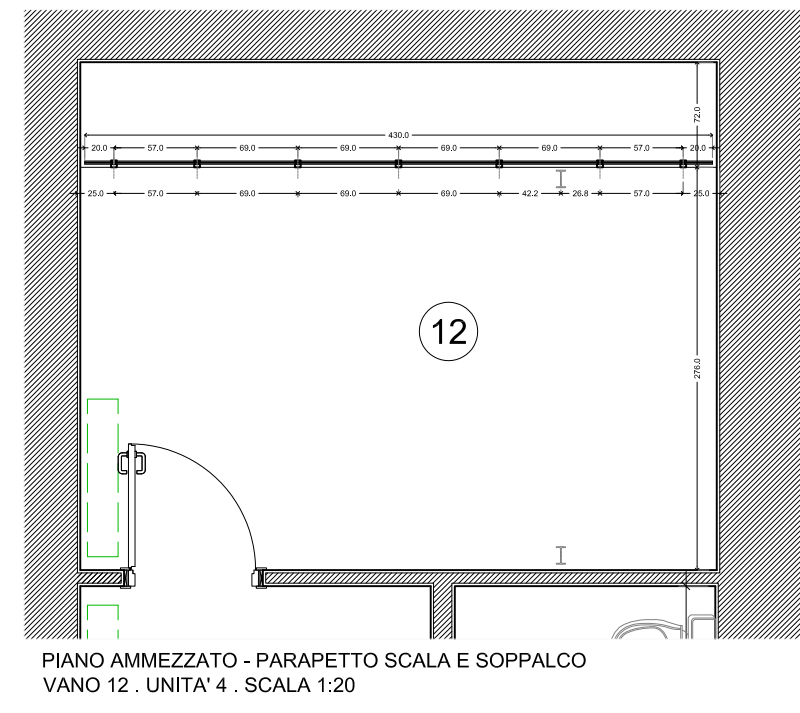
VISTA FRONTALE - PARAPETTO SCALA E SOPPALCO
VANI 4 E 9 . UNITA' 4 . SCALA 1:20



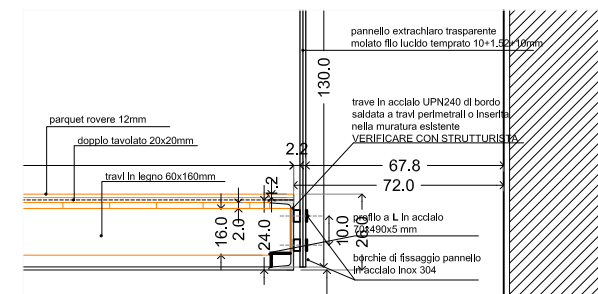
SEZIONE A-A' VANO 12 . UNITA' 4 . SCALA 1:20



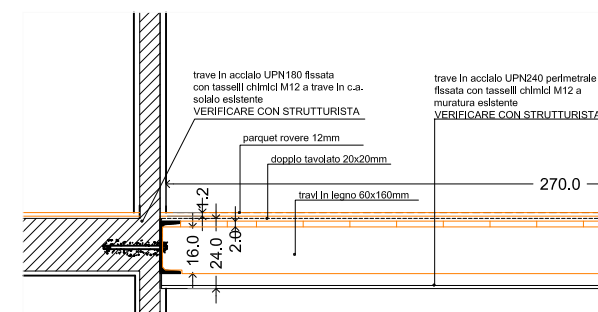
SEZIONE B-B' VANO 12 . UNITA' 4 . SCALA 1:20



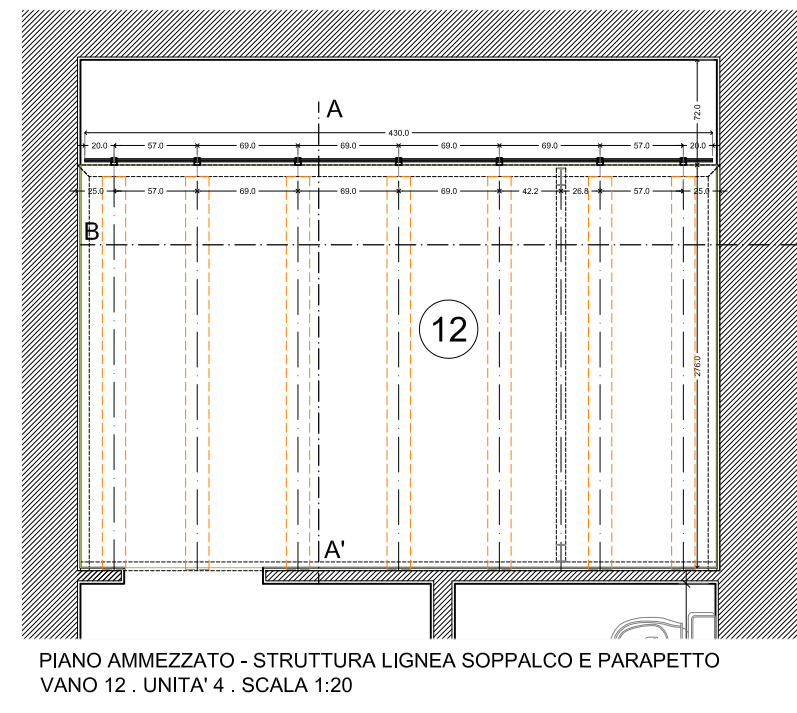
PIANO AMMEZZATO - PARAPETTO SCALA E SOPPALCO
VANO 12 . UNITA' 4 . SCALA 1:20



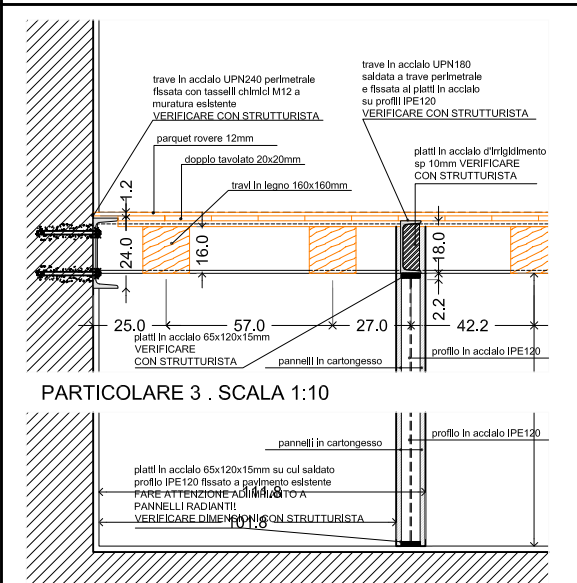
PARTICOLARE 1 . SCALA 1:10



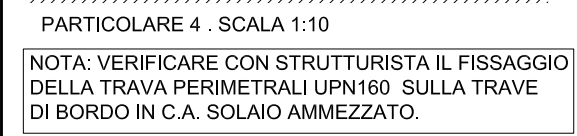
PARTICOLARE 2 . SCALA 1:10



PIANO AMMEZZATO - STRUTTURA LIGNEA SOPPALCO E PARAPETTO
VANO 12 . UNITA' 4 . SCALA 1:20



PARTICOLARE 3 . SCALA 1:10



PARTICOLARE 4 . SCALA 1:10

NOTA: VERIFICARE CON STRUTTURISTA IL FISSAGGIO DELLA TRAVA PERIMETRALI UPN160 SULLA TRAVE DI BORDO IN C.A. SOLAIO AMMEZZATO.

NOTA: L'INTERASSE DEI FORI DI FISSAGGIO PANNELLO IN VETRO PASSANTI SU TRAVE DI BORDO UPN 240 VA VERIFICATA IN CANTIERE.